

# A True Corporate Partner

Thank you to the Walmart Foundation and several local Walmart facilities for their generous support of the LSS Food Pantries, CHOICES for Victims of Domestic Violence and Faith Mission!

During 2015, the Walmart Foundation's State Giving program awarded \$65,000 to the LSS Food Pantries for healthy food, \$10,000 to support the Ohio Benefit Bank at LSS, \$35,000 to CHOICES for healthy food and direct client assistance, and \$30,000 to help Faith Mission prepare and provide more healthy foods.

Local Walmart facilities also supported LSS programs through financial gifts, donations of food and other needed items, and help from their hard-working volunteers.

Walmart volunteers have helped in Faith Mission's Community Kitchen and in the Faith Mission Kitchen Garden, assisted clients and stocked shelves at the LSS Delaware County Food Pantry and worked with set-up and registration at the annual CHOICES Peacemaker Award Luncheon.

Volunteers from the Walmart

Distribution Center #6024 even bring a huge grill to Faith Mission's Community Kitchen and Faith on 8th each summer and treat everyone to a cookout lunch.

We are grateful for our corporate partner Walmart in helping to provide services to people in need.



Walmart volunteers prepare a meal at the Faith Mission Community Kitchen

Tracing its roots to 1912, LSS is a nonprofit social service agency affiliated with the Evangelical Lutheran Church in America and recognized by the Lutheran Church Missouri Synod. LSS provides human services for all people according to their needs. These services include food pantries, emergency shelters, affordable senior housing, retirement living, skilled nursing care and other services that strengthen communities.

## Yes, I would like to help LSS and its programs

I want to help those in need by giving to Lutheran Social Services, so it may continue to support the mission of

*Creating a Better World by Serving People in Need.*

Here's my gift of:

\$1,000    \$500    \$100    \$50    \$25    Other \_\_\_\_\_

### PLEASE USE IT FOR:

- The greatest need
- Other \_\_\_\_\_
- I am interested in making an estate gift
- Check here if you are a Thrivent member

### METHOD OF PAYMENT: CHECK   VISA   MASTERCARD   AMEX   DISCOVER

Name on credit card (please print) \_\_\_\_\_

Card number: \_\_\_\_\_ / \_\_\_\_\_ / \_\_\_\_\_ / \_\_\_\_\_

Expiration Month: \_\_\_\_\_ Year \_\_\_\_\_

Signature \_\_\_\_\_

Please make your check payable to Lutheran Social Services of Central Ohio

PO Box 182010 • Columbus, Ohio 43218-2010

or donate online at: [www.lssco.org](http://www.lssco.org)

Your gift is tax-deductible as allowed by law.

You will receive a receipt.

Name \_\_\_\_\_

Address \_\_\_\_\_

City/State/Zip \_\_\_\_\_

Phone (      ) \_\_\_\_\_ Email \_\_\_\_\_

LD1603

Spring Quarter

## Inside

President's Message  
pg. 2

Filing Taxes for Free  
pg. 2

Celebrating the Past  
and Planning for  
the Future  
pg. 3

A True Corporate  
Partner  
pg. 4

# THE LEADER

Lutheran Social Services of Central Ohio Newsletter

## Restoration of a Life

At LSS CHOICES for Victims of Domestic Violence, we see a wide variety of cases that demonstrate to us time and time again that there is no "typical" survivor of domestic violence. At its core, abuse is about power and control. Our featured story from Sarah, a survivor of domestic violence, illuminates how this abuse and wielding of power can take on many forms. It is imperative that those who are suffering from any type of abuse, whether it be emotional, psychological or physical, seek help. Thanks to your generous support, we are able to provide safe shelter and programs that provide healing to those in need. It is through these services Sarah rebuilt her life and regained her sense of self.

"The beginning of my relationship with my ex-husband was like a dream come true. We were building the life that I always hoped to have. When my daughter was born, he asked me to give up my career to stay at home with our daughter. I always wanted to be a stay at home mother, so I thought this was just another piece of the beautiful life we were building together.

With the way things were going, I could not have been prepared for what happened next. Things started to change slowly over time and piece by piece, I watched the life we had made fall apart. I had to beg for money to meet basic needs, was criticized constantly if our house was not perfectly cleaned, and he refused to help me with our daughter when I was ill. I even began to lose contact with my family as my time was consumed attempting to meet my husband's unrealistic and demanding expectations. Every time I thought I figured out how to keep the peace and keep him happy, he would pile on more expectations and insult me incessantly.



Sarah escaped her abuser and reclaimed her sense of self.

Ultimately, I reached a point where the stress of the relationship was affecting my physical health. This is when my family stepped in and noticed how unhealthy and abusive my relationship had become. It wasn't until I met with someone at CHOICES that I realized what I had experienced was considered abuse. Luckily, I was able to have their support because even after I left him the abuse continued through the legal process.

I am now divorced from my husband and have primary custody of my child. I have recently regained employment in my profession and reclaimed my sense of self.

Knowing someone was not only there for me but truly cared has helped me pick up the pieces and move ahead in my life. CHOICES was undoubtedly the right choice for me. My counselor has been wonderful and has given me the tools to see my value, self worth, and the ability to navigate through the ending of an unsafe and unhealthy relationship. I truly believe CHOICES was the answer to my prayers for the help I needed but could not afford. I am so thankful for the much needed services they provide to those in need."

Lutheran Social Services of Central Ohio

Lutheran Social Services of Northern Ohio · Lutheran Social Services of Southern Ohio

Creating a Better World by Serving People in Need



## Sign up to Receive *The Leader* by Email

In an effort to be better stewards of our resources - both monetary and natural - LSS is now offering *The Leader* newsletter in email format. If you would like to receive the quarterly *Leader* by email, please go to [www.lssco.org/leaderform-optin.asp](http://www.lssco.org/leaderform-optin.asp). Thank you for your support!

Follow us on Facebook and Twitter!

## President's Message



Dear Friend,

For someone who is in need, a nutritious meal served with love means everything.

This Easter, your kindness and support mean something extra special to our hungry and homeless neighbors.

It means the gift of nourishing food through the LSS Food Pantries and a hot, nutritious meal served at our Faith Mission Community Kitchen. It means safe shelter for domestic violence victims and seniors living on a fixed income. It is a message of hope that says...YOU ARE NOT ALONE. YOU ARE NOT FORGOTTEN.

LSS will once again open our doors and our hearts this Easter to hungry men, women

and children in need. Some have suffered sudden job loss and crushing medical bills. Others have endured untreated mental health issues and addictions that have led to chronic homelessness.

Regardless of their circumstances, all need our compassion and the chance at a renewed life - so much a part of the Easter story.

We can't do this alone. We need your support to help our hungry and hurting neighbors build futures filled with health, hope and dignity.

I assure you, the returns on your kindness will be tenfold: "Give, and it will be given to you." Luke 6:38

As we near Easter, all of us at LSS - our staff, volunteers and clients - thank you for your generous spirit that makes our work possible throughout the year.

May God bless you this Easter and always,  
Sincerely,

The Rev. Larry A. Crowell  
President and CEO

## Filing Taxes for Free

Most families with an adjusted gross income of less than \$95,000 can file federal and state income taxes for FREE with the Ohio Benefit Bank (OBB). As an Ohio Benefit Bank partner, LSS has a self-serve link that you and your family and friends can use to file your own taxes at no charge. Simply go to [www.lssco.org](http://www.lssco.org) and click on the OBB tax link on the left-hand side. By maximizing tax refunds and reducing household costs, the OBB can increase a family's available cash on hand and strengthen their ability to move toward self-sufficiency and stability.

Last year we filed taxes for 925 households, with returns totaling an astounding \$1,503,501. Our goal this year is to file at least a thousand returns.

"This program provides a convenient and secure filing system for people who may not have the funds to pay for a company to file their taxes," said Debera Diggs, LSS director of OBB.

Your privacy is protected through the OBB. We will never see your name or any other personal information when you use the self-serve option.

## Celebrating the Past and Planning for the Future

On February 6, 1966, in response to the City Mission closing, a group of Lutheran pastors and community leaders opened Faith Mission. At 5 p.m. sharp, the doors opened and 14 men entered to eat a hot meal and warm themselves. Initially, the budget was around \$200 a month, and the mission depended on congregational groups to provide the meals as well as a nightly worship service.

A lot has changed in 50 years, but our core mission remains the same - to provide a welcoming meal, safe and warm shelter, and hope for a brighter future.

In order to continue this mission, a new shelter building adjacent to our current Client Services Center has been acquired to make the transition from homelessness to home easier.

The availability of this existing building

and its proximity created an opportunity to develop a unique campus in which to carry out our mission. But renovations must happen before our vision can be realized.

The new building will include two separate shelters with distinct entrances. The women's shelter will accommodate up to 42 women, and the men's shelter will house up to 110.

Recognizing the importance of stable, living-wage employment to permanent housing, we will also expand our resource center to 20 workstations and offer more job training.

All of these improvements will help our clients get back on their feet and into stable housing that much quicker. Your continued support helps us address current and emerging needs of our residents. Thank you!



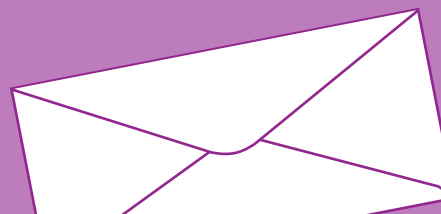
Thank you for your faithful support!

Grace House, a secured memory care center, is now open at Kensington Place. For more information on its personalized Alzheimer's and Dementia care in a small neighborhood setting, please contact Tiffany Ori at [tori@lssco.org](mailto:tori@lssco.org) or 614-252-5276.

For information on retirement living, please visit our website [www.kensingtoncolumbus.com](http://www.kensingtoncolumbus.com)

For the most up-to-date information, please visit our website at [www.lssco.org](http://www.lssco.org)

*The Leader* is written, designed and produced by the Communications Department of Lutheran Social Services of Central Ohio. Copyright © 2016, Lutheran Social Services of Central Ohio. 500 W. Wilson Bridge Rd., Ste. 245 • Worthington, Ohio 43085 (614) 228-5200 • [www.lssco.org](http://www.lssco.org)



Please use the enclosed gift card and envelope to make a donation to help LSS and its programs.

